

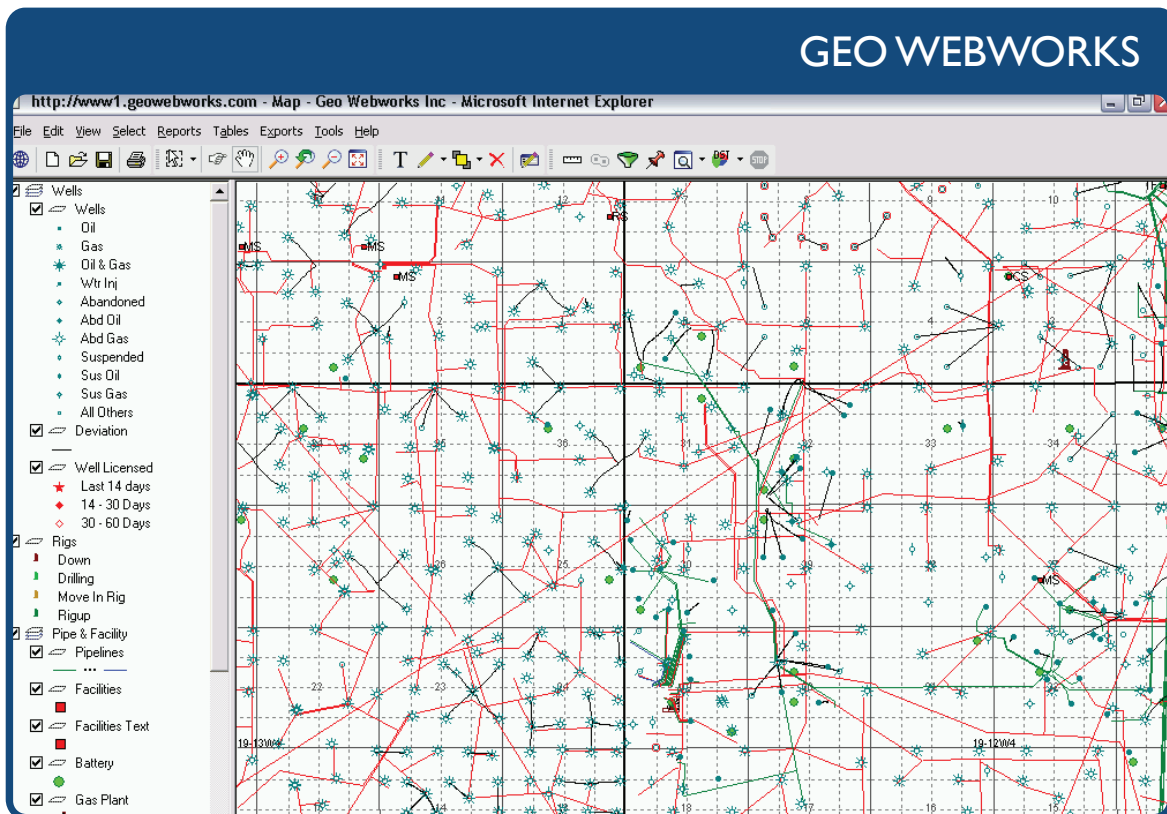
# Geo Webworks

## Intuitive Access to Petroleum Data

Looking for easy to use and low maintenance Oil and Gas data solution? Geo Webworks has been offering web-based access to important oil and gas data sets since 2000.

- Online Solution
- Easy to Use Map Interface
- Industry Standard Reports
- User Customized Tables
- Exports to Current Oil and Gas Software
- Integration with In-house Proprietary Data and Software
- Low Maintenance Requirements

Geo Webworks saves you time and money by offering a petroleum data solution that is flexible, cost effective and reliable. Ideal as a company portal, it can ensure all individuals get the data they need without tying up other software resources. It can also be a cost effective way for field and service workers to get the data they need.



Put the Power of Geo Webworks to work for you.

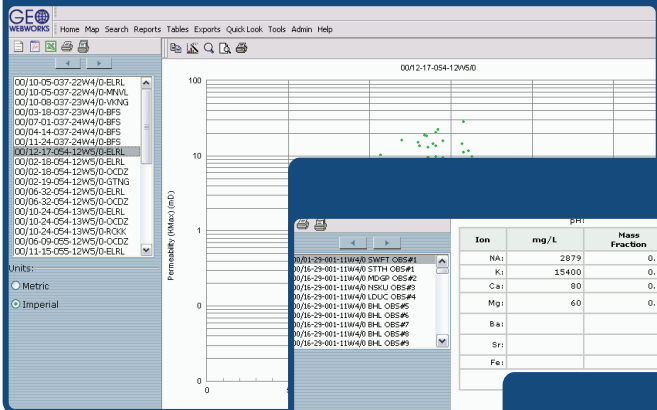
To learn more call 403-301-4001 or e-mail [info@geowebworks.com](mailto:info@geowebworks.com)

2020, 801 - 6<sup>th</sup> Avenue S.W., Calgary, Alberta, Canada T2P 3W2

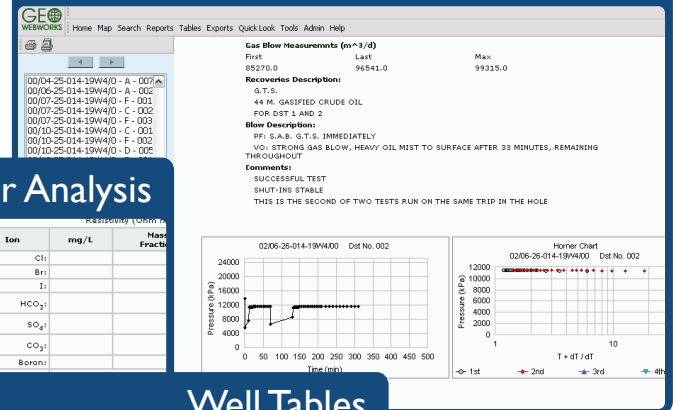
# Data Sets Available

- Well Tickets
- Production Data and Graphs
- Well Test and Pressure History
- Pipelines and Facilities
- Alta Spacing, Holding and Commingled Orders
- Core and Fluid Analysis
- Pool Reserves
- Pas Files
- Directional Surveys
- Company Working Interest and Production Summaries
- Hydro-Fax DSTs
- Grid/Culture Export
- Land and Unit Information
- H2S Data
- Completions Data

## Core Reports



## DST Data



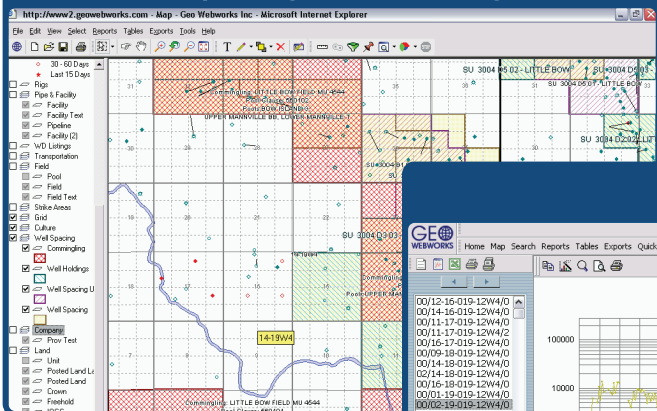
## Water Analysis

| Ion | mg/L  | Mass Fraction | meq/L | Ion              | mg/L | Mass Fraction |
|-----|-------|---------------|-------|------------------|------|---------------|
| Na  | 2079  | 0.156         | 125.2 | Cl               |      |               |
| K   | 15400 | 0.036         | 393.9 | Br               |      |               |
| Ca  | 80    | 0.004         | 4.0   | I                |      |               |
| Mg  | 60    | 0.003         | 4.9   | HCO <sub>3</sub> |      |               |
| Ba  |       |               |       | SO <sub>4</sub>  |      |               |
| Sr  |       |               |       | CO <sub>3</sub>  |      |               |
| Fe  |       |               |       | Boron            |      |               |

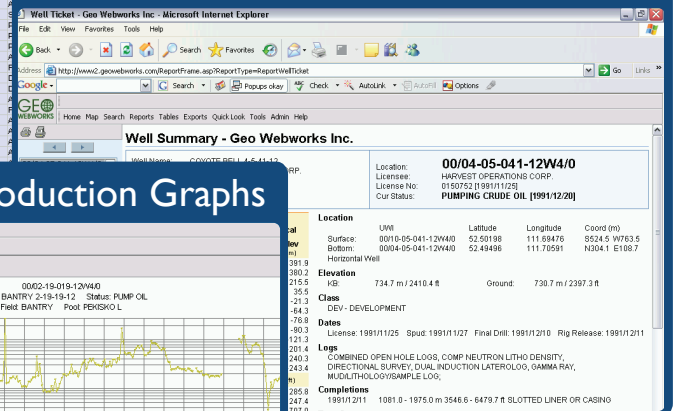
## Well Tables

| Location            | Field      | Pool Name          | Status       | Spud Date  | Licensee                           |
|---------------------|------------|--------------------|--------------|------------|------------------------------------|
| 00/13-04-014-18W4/0 | LITTLE BOW | RESERVES           | DRLAC        | 5/15/2005  | SPHERE ENERGY CORP.                |
| 00/16-04-014-18W4/0 | LITTLE BOW | RESERVES           | DRLAC        | 5/13/2005  | SPHERE ENERGY CORP.                |
| 00/11-05-014-18W4/0 | LITTLE BOW | RESERVES           | ABD          | 10/25/1972 | PREMIER RESOURCES, LTD.            |
| 00/10-06-014-18W4/0 | LITTLE BOW | RESERVES           | ABD          | 12/17/1977 | CANADIAN NATURAL RESOURCES LIMITED |
| 00/12-06-014-18W4/0 | LITTLE BOW | UPPER MANNVILLE MM | SUSP WATER I | 5/12/1990  | ATLAS ENERGY LTD.                  |
| 00/13-06-014-18W4/0 | LITTLE BOW | UPPER MANNVILLE MM | PUMP CR-OIL  | 4/20/1990  | ATLAS ENERGY LTD.                  |
| 00/14-06-014-18W4/0 | LITTLE BOW | SECOND WHITE SPECS | FLOW GAS     | 4/23/2004  | ATLAS ENERGY LTD.                  |
| 00/16-06-014-18W4/0 | LITTLE BOW | RESERVES           | NV           |            | ATLAS ENERGY LTD.                  |
| 00/03-07-014-18W4/0 | LITTLE BOW | RESERVES           | ABD          | 7/28/1990  | SHININGBANK ENERGY LTD.            |

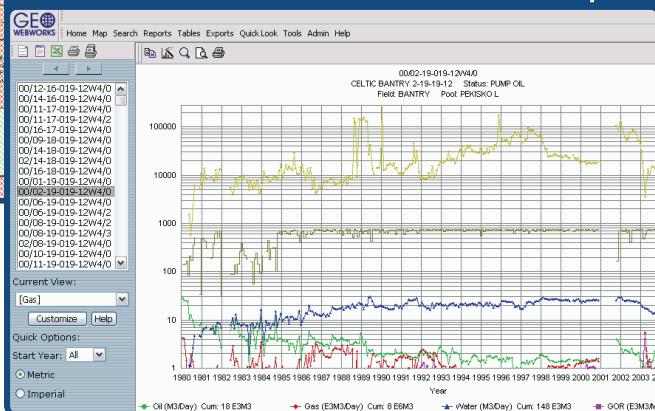
## Well Spacing & Commingled Data



## Well Tickets



## Production Graphs



Put the Power of GeoWebworks to work for you.  
To learn more call 403-301-4001 or e-mail [info@geowebworks.com](mailto:info@geowebworks.com)  
2020, 801 - 6th Avenue S.W., Calgary, Alberta, Canada T2P 3W2